



# WTRBOX



With JMark's industry leading-quality products, you'll reduce hazardous waste, save water, and save money. Over our 40+ years of business and expertise, we have refined our process down to a science. We will collaborate with you to carefully evaluate your system's specific needs. We guarantee the reliability and function of our equipment and will be there to answer questions every step of the way.

## APPLICABLE INDUSTRIES

- Aerospace
- Electronics
- Metal finishing
- Automotive
- Power Generation
- Petrochemical
- Food & Beverage
- Pharmaceuticals
- Mining
- Textile

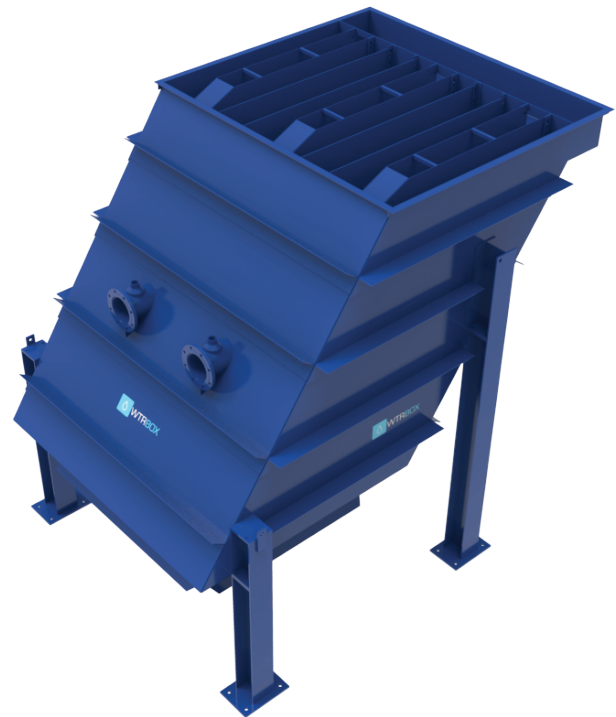
### Also used to treat:

- Groundwater
- Industrial process water
- Backwash from sand filters

**JMS - 750 Slant Plate Clarifier** **150 GPM**

## FEATURES

- Fully Integrated skid mounted system with controls monitoring
- Space-saving design that takes up around 2/3 of the floor space a non-inclined clarifier takes up
- Large settling surface areas
- Robust design for performance, durability, and reliability in industrial applications
- Highly efficient design maximizes the equal distribution and balance of water through the settling plates for superior liquids/solids separation
- Fiberglass plate pack
- Tnemec interior/exterior coating systems
- Stainless overflow components and hardware
- Equipped with WTRBOX proprietary remote monitoring and controls capability
- Shipped ready for install and start-up with minimal labor and minimal maintenance
- Custom sizes available (Other standard sizes: 25, 50, 70, 100, 120 gpm units)
- No moving parts in settling area
- Made in the USA and UL approved



## SPECS

- Design max GPM = 150 GPM
- Projected plate surface area (@ 55° angle) =  $<.2$  gpm per sq.ft. of projected surface area
- Design suspended solid removal = 600 milligrams per liter influent
- Liquid solids settling rate = 12 ft. per hour

