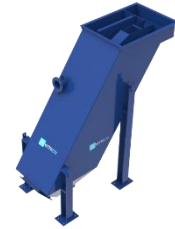


JMS-Slant Plate Clarifier Spec Sheet

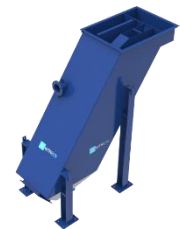
JMS-75

| | |
|---|---------------------|
| Dimensions | 4'4"W x 7'3"L x 6'H |
| Weight (Empty) | 1,600 LBS |
| Operational Weight (Full) | 4,150 LBS |
| Influent SS 600mg/l @ 0.20Gal/proj.sq.ft. based upon solids settling at a minimum rate of 12-14 feet per hour. | 20 GPM |
| Projected Surface Area | 78 sq ft |
| Solution Volume | 300 Gallons |
| Price | \$21,500.00 |



JMS-125

| | |
|---|-----------------------|
| Dimensions | 4'6"W x 10'L x 10'3"H |
| Weight (Empty) | 2,000 LBS |
| Operational Weight (Full) | 7,950 LBS |
| Influent SS 600mg/l @ 0.20Gal/proj.sq.ft. based upon solids settling at a minimum rate of 12-14 feet per hour. | 30 GPM |
| Projected Surface Area | 156 sq ft |
| Solution Volume | 700 Gallons |
| Price | \$36,500.00 |



JMS-250

| | |
|---|---------------------------|
| Dimensions | 6'5"W x 10'10"L x 11'11"H |
| Weight (Empty) | 3,820 LBS |
| Operational Weight (Full) | 14,020 LBS |
| Influent SS 600mg/l @ 0.20Gal/proj.sq.ft. based upon solids settling at a minimum rate of 12-14 feet per hour. | 60 GPM |
| Projected Surface Area | 312 sq ft |
| Solution Volume | 1200 Gallons |
| Price | \$45,500.00 |



JMS-350

| | |
|---|---------------------------|
| Dimensions | 6'5"W x 10'10"L x 11'11"H |
| Weight (Empty) | 4,400 LBS |
| Operational Weight (Full) | 17,150 LBS |
| Influent SS 600mg/l @ 0.20Gal/proj.sq.ft. based upon solids settling at a minimum rate of 12-14 feet per hour. | 70 GPM |
| Projected Surface Area | 367 sq ft |
| Solution Volume | 1500 Gallons |



JMS-Slant Plate Clarifier Spec Sheet

| | |
|-------|-------------|
| Price | \$51,500.00 |
|-------|-------------|

JMS-500

| | |
|---|-----------------------|
| Dimensions | 6'5"W x 12'9"L x 12'H |
| Weight (Empty) | 6,000 LBS |
| Operational Weight (Full) | 28,100 LBS |
| Influent SS 600mg/l @ 0.20Gal/proj.sq.ft. based upon solids settling at a minimum rate of 12-14 feet per hour. | 100 GPM |
| Projected Surface Area | 532 sq ft |
| Solution Volume | 2600 Gallons |
| Price | \$74,500.00 |



JMS-600

| | |
|---|-----------------------|
| Dimensions | 6'5"W x 13'8"L x 12'H |
| Weight (Empty) | 7,700 LBS |
| Operational Weight (Full) | 33,200 LBS |
| Influent SS 600mg/l @ 0.20Gal/proj.sq.ft. based upon solids settling at a minimum rate of 12-14 feet per hour. | 120 GPM |
| Projected Surface Area | 606 sq ft |
| Solution Volume | 3000 Gallons |
| Price | \$83,000.00 |



JMS-750

| | |
|---|--------------------------|
| Dimensions | 9'9"W x 12'9"L x 11'11"H |
| Weight (Empty) | 9,200 LBS |
| Operational Weight (Full) | 41,500 LBS |
| Influent SS 600mg/l @ 0.20Gal/proj.sq.ft. based upon solids settling at a minimum rate of 12-14 feet per hour. | 160 GPM |
| Projected Surface Area | 800 sq ft |
| Solution Volume | 3800 Gallons |
| Price | \$95,000.00 |

